

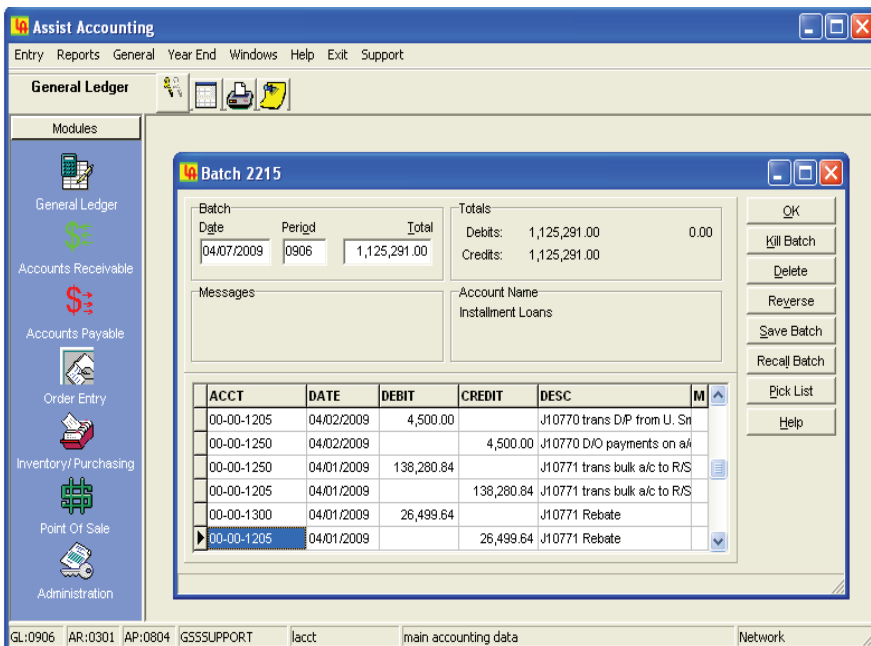


Legacy Software

Designed for your peace of mind



Legacy Accounting - The Cost Effective Accounting Solution



Legacy Accounting is a fully integrated, full-featured, multi-user accounting system that offers features and flexibility unmatched by many other accounting systems in the market. It is suitable for use by companies of all sizes and types. Its user friendly interface and intuitive design makes it easy to learn and operate.

Legacy Accounting consists of a core of seamlessly integrated modules, which together provide a powerful solution that delivers the control and reporting you need to keep your business competitive. It supports wide area networking, making it suitable for use by businesses that have several geographically dispersed business locations. All Legacy applications boast robustness and flexibility and advanced features that make it easy for you to better manage your business and offer your customers exceptional service. Legacy Accounting consist of the following six seamlessly integrated modules that together offer your company the tools necessary for good financial management.

General Ledger, Accounts Payable, Accounts Receivable, Inventory/Purchasing, Order Entry and Administration.

Legacy Accounting can be operated as a batch-oriented system where transactions posted from subsidiary modules create batches in the general ledger, or as a fully on-line system where transactions posted in subsidiary modules immediately update general ledger accounts. It can handle up to 100 subsidiary companies each with up to 100 cost centers. Unlike many accounting systems, the previous month or year does not have to be closed out prior to entering transactions for the current accounting period. The end of year can be closed and unclosed throughout the following year as needed. This allows you to enter data for the current year and still make changes to the prior year as needed.

Digital Business Systems

Call 246-424-4942 www.digital-business-systems.com

■ Networking/Security

Legacy Accounting can be used either as a stand alone or multiuser application. There is no limit to the number of simultaneous users. The robust client/server technology on which Legacy Accounting is built ensures fast, secure and reliable operation over LANs, WANs and the Internet. Its flexible user security system allows individual user's access to be determined for each menu selection.

■ Real-time/Batch modes

Legacy Accounting supports both the on-line (real time) or batch methods of operation. In the on-line mode, transactions entered in any of the subsidiary modules (AR/AP/IP/OE) are immediately posted to the General Ledger accounts. Several smaller companies prefer this mode of operation. The batch mode is generally preferred by most accountants and larger companies. In this mode, transactions posted in other modules create batches in the General Ledger, which have to be printed and posted in order for them to update the General Ledger accounts.

■ Two Years Open

Transactions for two consecutive years may be maintained in the system at any time and the previous year can be closed and unclosed as often as is necessary to facilitate the entry of prior year adjustments. The year-end process therefore does not hold up the entry and processing of transactions for the following year. Reports for the previous year can be printed at any time, provided you have not purged the data.

■ Multi-Entity/Multi-Department

Up to 100 departments or entities each having up to 100 cost centres may be defined. Financial statements can be printed for individual cost centers or departments or for the consolidated entity. A replicate feature is included in the Chart of accounts to make it easy to quickly replicate your account structure for new departments or entities.

■ Budgeting

The budgeting feature makes it easy for you to keep track of and control your company's expenditure. Budget figures are entered by month and a report comparing actual and budget and showing the amount remaining in the budget may be printed.

■ Manufacturing

Legacy Accounting is also suitable for use by manufacturing companies. The inventory module permits kitting, assemblies, prints bill of material and inventory forecast reports and has material requirements planning functions.

General Ledger

- Caters For Up To 100 Departments Or Entities
- Supports Multiple Account Levels
- Consolidates Reporting Entities
- Automatic Journal Entry Numbering
- Supports Recurring Journal Entries
- Supports Automatic Reversing Journal Entries
- Validates Posting Dates
- Permits Posting To Prior Periods
- Permits Posting To Future Periods Of The Same Fiscal Year
- Full Bank Reconciliation Of All Bank And Cash Accounts
- Permits Multiple Open Periods At The Same Time
- Displays The Source Of Transaction
- Prints financial Statements To Screen And Printer
- Generates Automatic year-end Closing Entries

Accounts Receivable

- Prints Mailing Labels
- Supports Prepayment Of Invoices
- Processes And Tracks Over Payments
- Operates An Open Item Billing System
- Permits The Generation Of Single Or Recurring Transactions
- Tracks Unapplied Payments And Past Due Invoices
- Generates Late Charges On Past Due Invoices
- Maintains Multiple Tax Codes And Billing Addresses per Customer
- Permits Debit & Credit Memo Processing
- Prints Customer Statements

Inventory/Purchasing

- Supports Negative On-hand Quantities
- Supports Multiple Price levels For Each Item
- Caters For Both Products And Services
- Supports Multiple Warehouse Locations
- Supports Sales Price Tables
- Tracks Effective Dates For Sales Prices
- Records Vendor Part Numbers
- Bill Of Materials Processing
- Build Requirements To Order Or To Forecast
- Generates Production Schedule
- Maintain And Sell Items As A Kit
- Automatically Generates Purchase Orders To Restock Inventory
- Tracks Sale Activity By Individual item

Accounts Payable

- Supports One-time Vendors
- Supports multiple Ship to Addresses
- Void Check Feature For Easy Check Voiding
- Voiding Checks Automatically Reinstates Transaction
- Permits The Processing Of Full Or Partial Payment Of Invoices
- Supports The Processing Of Manual Or System Generated Checks
- Easily Apply One-Time Or Recurring Expenses
- Permits The Writing Of Checks From Multiple Checking Accounts
- Supports The Processing Of Debit & Credit Memos
- Supports The Processing Of Refund Checks
- Generates A Cash Requirements Report

Order Entry

- Generates Invoices Orders And Quotes
- Creates And Fills Back Orders
- Easily Change Customers' Quotes Into Orders
- Tracks Sales Activity Per Salesperson
- Processes Recurring Customers' Orders Without Re-Entering Data
- Permits The Entry Of Orders From Multiple Locations
- Generates Recurring Invoices On A Weekly or Monthly Basis

Point of Sale (Optional)

- Supports a variety of bar code readers, receipt printers and cash drawers.
- Support for both receipt and invoice printers.
- Uses either user-generated barcodes, pre-printed barcodes or a combination of both.
- Handles an unlimited number of stores with up to one hundred registers per store.
- View history of customers' transactions.
- Place transactions on hold.
- Collect customer information if desired.
- Reprint old Invoices.
- Simple price check feature.
- Broadcast messages to all, or individual registers.
- Accept multiple payment types on the same transaction.
- Add comments to transactions.

Reports

Over 50 detailed reports keep you fully informed of the financial status of your business and equip you with the information necessary to make decisions in a timely manner.