



Legacy Payroll 2009

Designed for your peace of mind



Increase your productivity and operational efficiency.

Legacy Payroll 2009, is the high performance, high reliability application that progressive companies are switching to.

Technologically Advanced

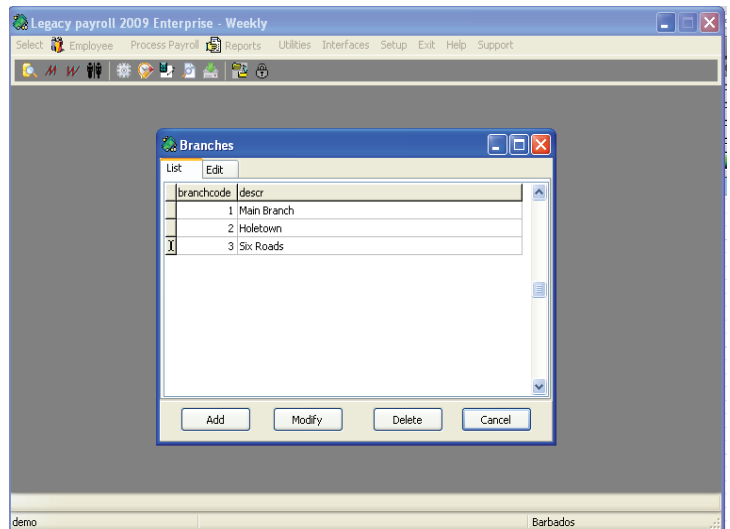
Legacy payroll is an advanced payroll application that was designed and built using the latest object-oriented, multi-tiered, client-server technology. It boasts extreme scalability and is suitable for use by companies of all sizes,

Legacy Payroll may be used as a single-user application installed on a stand-alone computer or as a multi user application installed on a local or wide area network. Its ultra-modern design permits it to be deployed in numerous configurations and allows the client, server and data to be in separate and remote locations, including being in different countries.

Legacy Payroll is available in three editions, basic, professional and enterprise. This prevents you having to purchase features before you need them. As your business grows you may upgrade seamlessly to a different edition.

Branch Support

For those larger companies having several branches or remote locations, Legacy Payroll is the ideal solution. Legacy permits the definition of an unlimited number of branches and while every employee must be assigned to a branch, an employee's pay may be split between several branches and departments. This provides a more accurate account of each branch's payroll cost.



Regional Functionality

Legacy payroll contains the tax structures for several Caribbean countries. If you operate regionally, Legacy is your ideal solution. You can either have separate installations in each country, a payroll client in each country and the server and data in a central location, or centralize the payrolls for all countries in one location. Legacy Payroll has several features that facilitate these modes of operation such as its ability to email pay slips to employees.

Countries of Operation

Legacy Payroll currently processes payrolls for employees in the following countries:

- | | |
|-------------------|-------------|
| Antigua | Guyana |
| Barbados | Trinidad |
| St. Vincent | Suriname |
| Dominica | Belize |
| St. Kitts & Nevis | Grenada |
| St. Lucia | St. Maarten |

Employee Information window showing Leave Tracking. The window includes fields for Employee No. (5), National ID No. (123456-0987), NIS/SS No. (198987), HR ID No., and ID No.2. Below these are tabs for Personal, Address, Employment, Pay, Taxes, Direct Deposit, Earnings, Deductions, and Leave. The Leave tab is active, showing a table of Leave History with columns for Leave Description, Started, Ended, and Days. The table lists various types of leave such as Vacation Earned, Carry Over loss, and Accrued Vacation Days.

Leave Tracking

Legacy Payroll automatically accrues vacation days earned and tracks and reports eleven types of employee leave. You can quickly determine how much you paid for the various types of leave over any time period and what percentage this was of your total payroll cost. Instantly print or view any employee's leave history. Maternity, vacation, certified and uncertified sick, bereavement, no-pay, personal, study and personal leave are all tracked by Legacy Payroll.

Asset Tracking

Legacy Payroll keeps track of company property in the possession of employees. It allows you to record issues and returns and print a list of items held by any employee. You no longer have to make desperate attempts to contact employees after they have left to ask them to return items that were in their possession. Keys, badges, vehicles, tools, any item can be tracked through Legacy Payroll.

Employee Information window showing Asset Tracking. The window includes fields for Employee No. (2), National ID No. (123456-0987), NIS/SS No. (198987), HR ID No., and ID No.2. Below these are tabs for Personal, Address, Employment, Pay, Taxes, Direct Deposit, Earnings, Deductions, and Leave. The Assets tab is active, showing a table of Assets with columns for descrip, detail, status, issued, and returned. The table lists an item 'Keys' issued on 02/01/2010.

Employee Information window showing Historical Information. The window includes fields for Employee No. (2), National ID No. (123456-0987), NIS/SS No. (198987), HR ID No., and ID No.2. Below these are tabs for Personal, Address, Employment, Pay, Taxes, Direct Deposit, Earnings, Deductions, and Leave. The Earnings tab is active, showing a table of Earnings with columns for prdate, type, descr, and amount. The table lists various types of earnings such as Basic Pay, Travel, Entertainment, National Insurance, Credit Union, Insurance, and Union Dues. Summary statistics at the bottom show Total Earnings of 621.00, Total Deductions of 212.72, and Net Pay of 408.28.

Historical Information

You have instant access to all historical pay information. You may view or print a detailed or summarized pay history for any employee for any previous period or range of periods.

Reports for any previous payroll may also be printed or viewed. Additionally you may save reports in several formats including PDF. This facilitates the mailing of reports to remote branches or associated companies.

- Interfaces to AccPac, Adagio and Legacy general ledgers.
- Uploads NIS monthly submissions and employees' PAYE annual returns electronically.
- Interfaces with several electronic time clock systems
- Calculates and tracks employer's benefit contributions (health, pension etc)
- Run a payroll for selected employees prior to the regular payroll run.

Legacy Payroll 2009

The Ultimate Payroll

Legacy Payroll 2009 Feature List (Abridged)

Feature	<i>Basic</i>	<i>Professional</i>	<i>Enterprise</i>
Unlimited number of user defined branches			
Unlimited number of user defined departments			
Supports monthly, semi-monthly, fortnightly or weekly pay periods			
Supports hourly, daily, weekly, monthly, annual or piece rates.			
Calculates vacation pay.			
Allows vacation time buy back.			
Unlimited number of user defined earnings and deduction headings.			
User maintained NIS/Social Security and PAYE tables.			
Calculates and tracks employer's portion of benefit contributions.			
Allows the splitting of employee's pay between branches and departments.			
Calculates tax on non-cash benefits (e.g. vehicles).			
Update employee's record manually (creates audit trail).			
Terminate/reinstate employees.			
Suspend employees' pay calculation.			
Change annual tax allowances globally.			
Allows the splitting of employee's pay between branches and departments.			
Maintain notes on each employee.			
On-line history shows details of every previous payroll for each employee.			
Generates the NIS electronic file and connects to the NIS portal for upload			
Generates Inland Revenue electronic file and connects to the IRD upload site			
Maintains emergency contact information			
Calculates service charge payments for hotel employees.			
Remit net pay or any deduction to third party institutions.			
Remit employees' net pay electronically			
Remit deductions to third parties electronically			
Generates the electronic ACH file for most banks.			
Prints employee and deduction remittance cheques			
Allows a separate bonus payroll run for bonus payments only			
Allows the payment of selected employees prior to the regular payroll run			
Accrues vacation leave due to each employee and tracks vacation taken.			
Prints accrued vacation days on the pay slip (switched on and off by the user)			
Tracks 11 types of leave including sick, maternity and vacation leave.			
Tracks company assets held by employees			
Imports hours from time clock ASCII files.			
Automatically emails pay slips to employees.			
Interfaces to Legacy, Adagio and AccPac General Ledgers			
Generates payroll expense analysis for payrolls between any range of dates			
View total leave in each category for any range of dates			
Flexible user security			
Available in multi-company versions			
Unlimited number of simultaneous users			
Operates over wide area networks (Internet Included)			



Digital Business Systems
Call: 246-424-4942

email: sales@digital-business-systems.com

Website: www.digital-business-systems.com

Edgehill Heights, St. Thomas, Barbados, BB22020